





हस्त-शुजाव

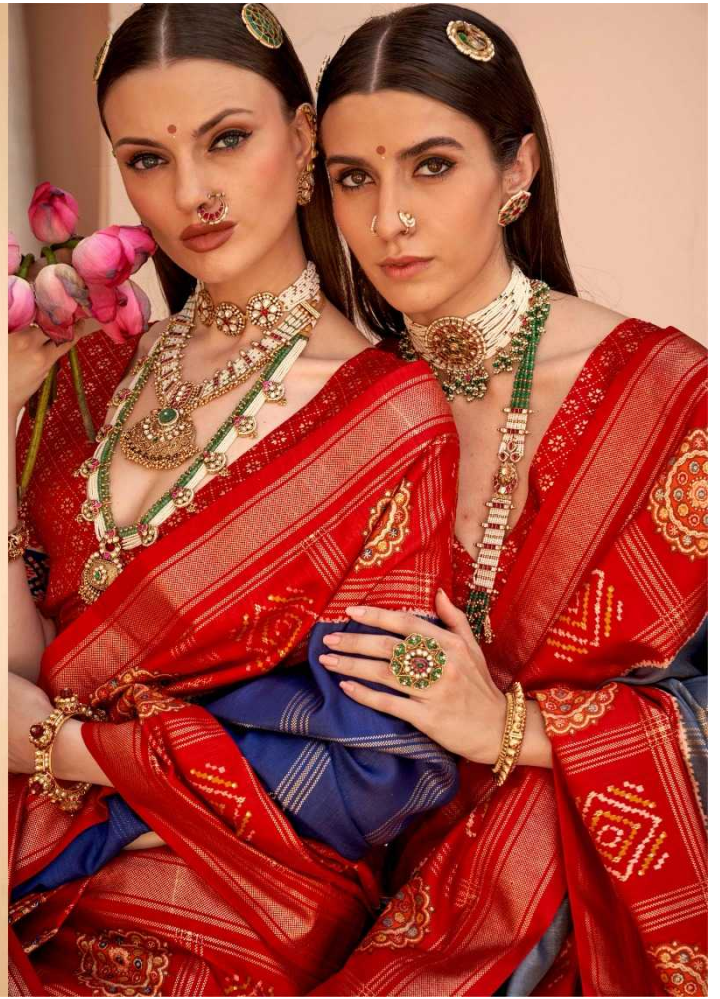
A Patola sari is a double ikat woven sari, usually made from silk, made in Patan, Gujarat, India. The word patola is the plural form; the singular is patolo. These saris are made using silk threads that are first dyed with natural colors and then woven together to create the intricate patterns and designs. They are usually worn for special occasions, such as weddings and formal events.





हस्त-शुद्धाव

A Patola sari is a double ikat woven sari, usually made from silk, made in Patan, Gujarat, India. The word patola is the plural form; the singular is patola. These saris are made using silk threads that are first dyed with natural colors and then woven together to create the intricate patterns and designs. They are usually worn for special occasions, such as weddings and formal events.





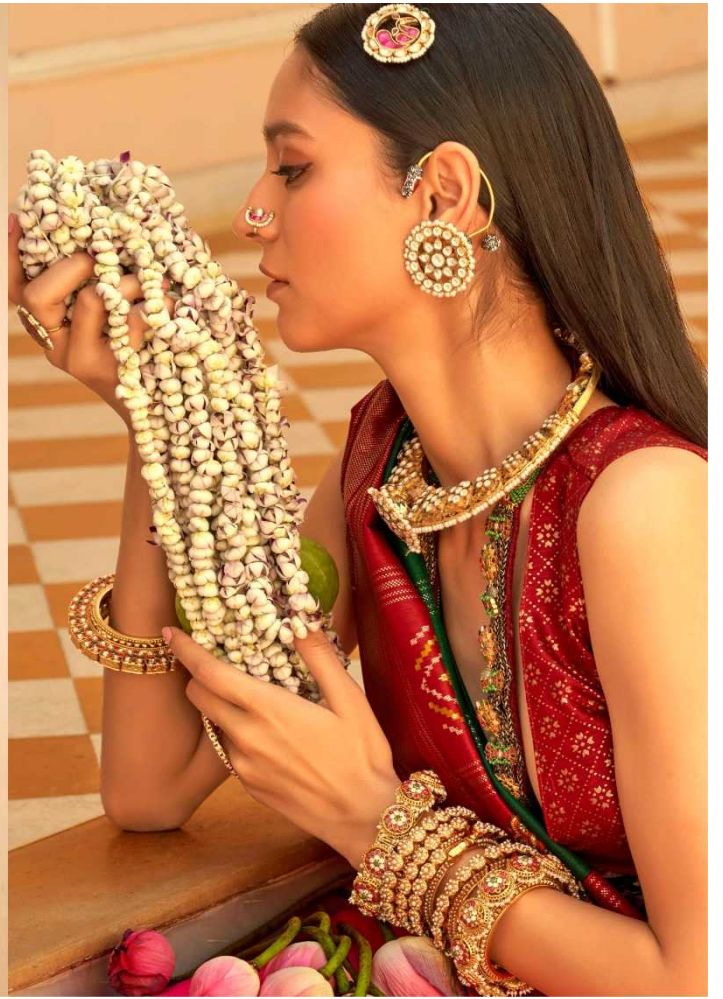


A Patola sari is a double ikat woven sari, usually made from silk, made in Patan, Gujarat, India. The word patola is the plural form; the singular is patola. These saris are made using silk threads that are first dyed with natural colors and then woven together to create the intricate patterns and designs. They are usually worn for special occasions, such as weddings and formal events.

गुलाब-पटोला



A Patola sari is a double ikat woven sari, usually made from silk, made in Patan, Gujarat, India. The word patola is the plural form; the singular is patola. These saris are made using silk threads that are first dyed with natural colors and then woven together to create the intricate patterns and designs. They are usually worn for special occasions, such as weddings and formal events.







TR-10284



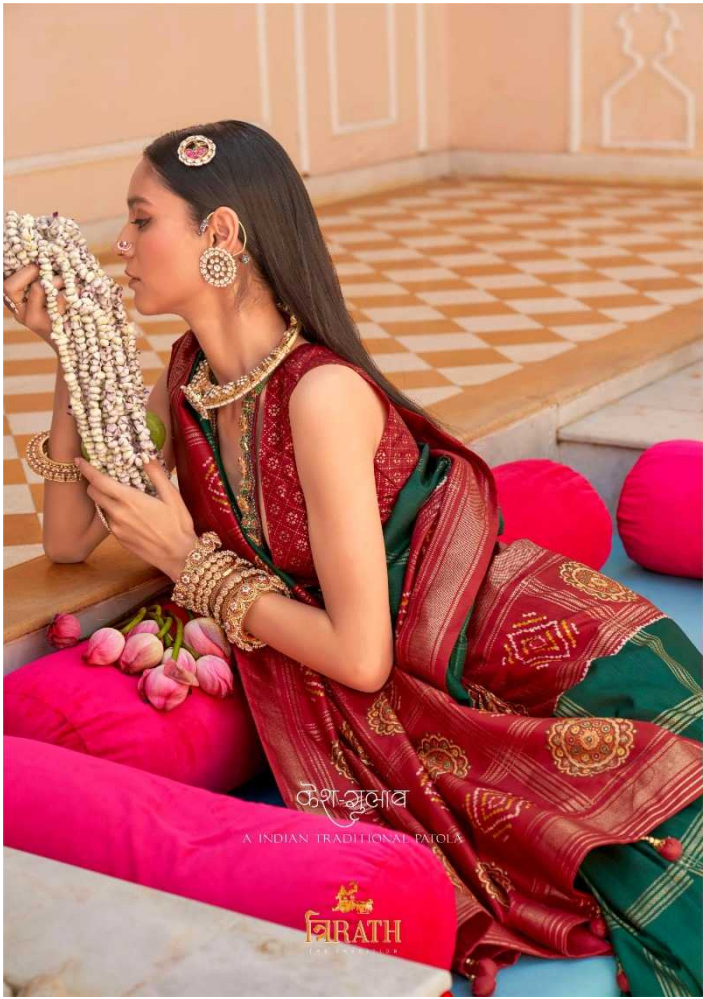
મન ગુલાવ

INDIAN TRADITIONAL PATOLA

PARATHI
THE TRADITION









TR-10280







TR-10276



TR-10277



TR-10278



TR-10279



TR-10280



TR-10281

IRATH
THE TRADITION



TR-10282



TR-10283



TR-10284

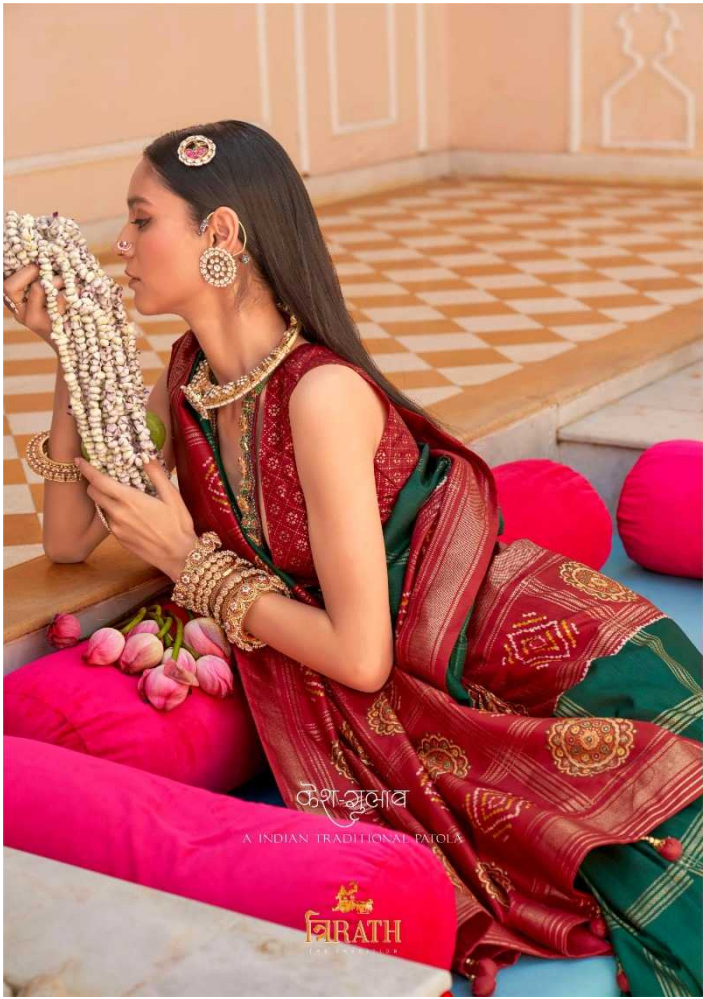
गुलाब-पटोला
GULAB PATOLA







TR-10280









TR-10284



મન ગુલાવ

INDIAN TRADITIONAL PATOLA

PARATHI
THE TRADITION

