





Dainty details, natural shade and  
a whiff of pure bliss; All in all,  
just the perfect ensemble for the woman who  
finds solace in extravagant chic.

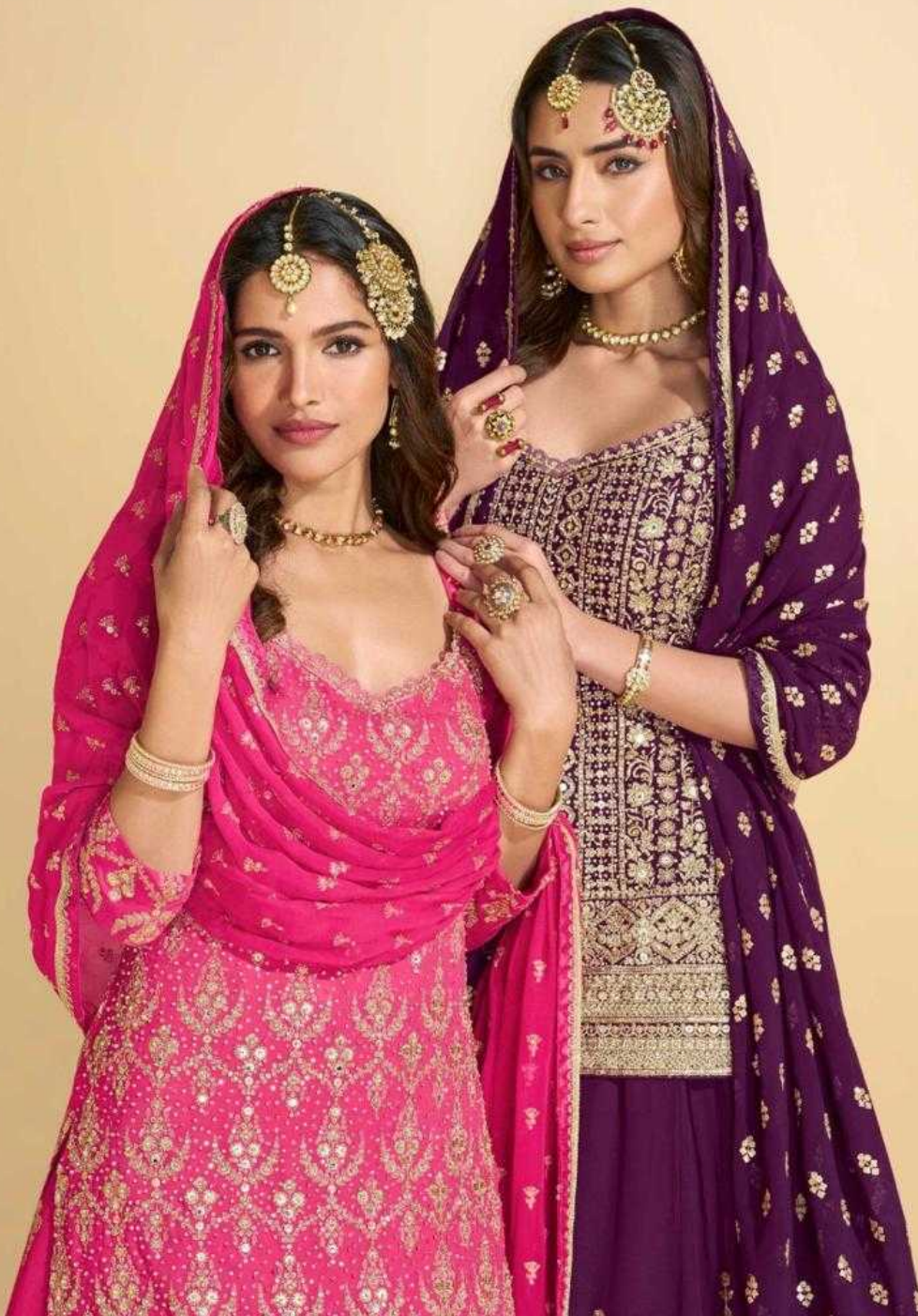
5802





# MADHUBALA

  
SAYURI®  
Designer







FESTIVE FALL



5800

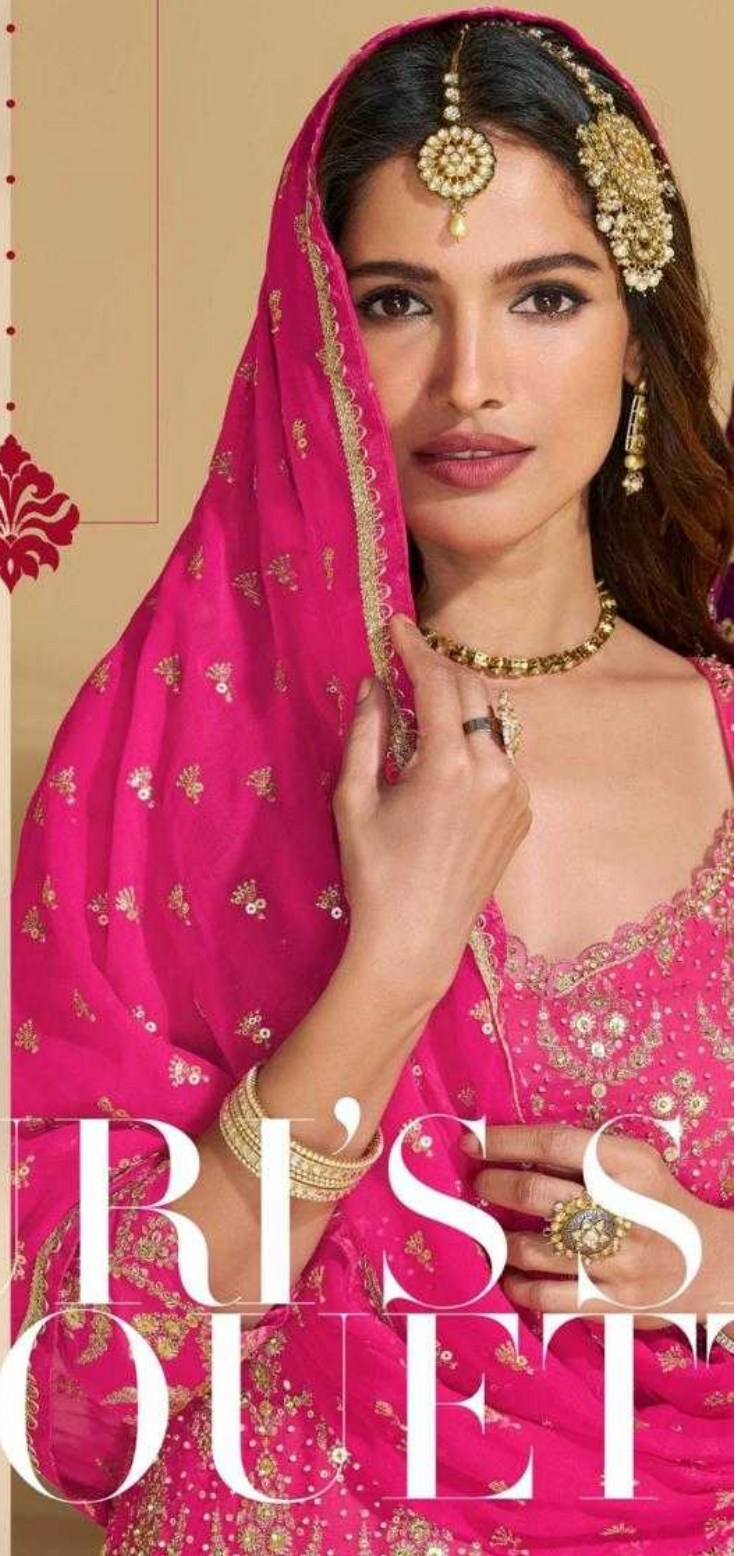
Feel like you've stepped straight out a regal empire;  
and your dream of looking like a princess is just accomplished!



FESTIVE FALL

make an unforgettable impression with  
SAYURI's sharp silhouettes,  
subtle hues and confident statements.

SAYURI'S  
SILHOUETTES





  
**SAYURI**<sup>®</sup>  
— Designer —



FESTIVE FALL









5801

Feel like you've stepped straight out a regal empire; and your dream of looking like a princess is just accomplished!

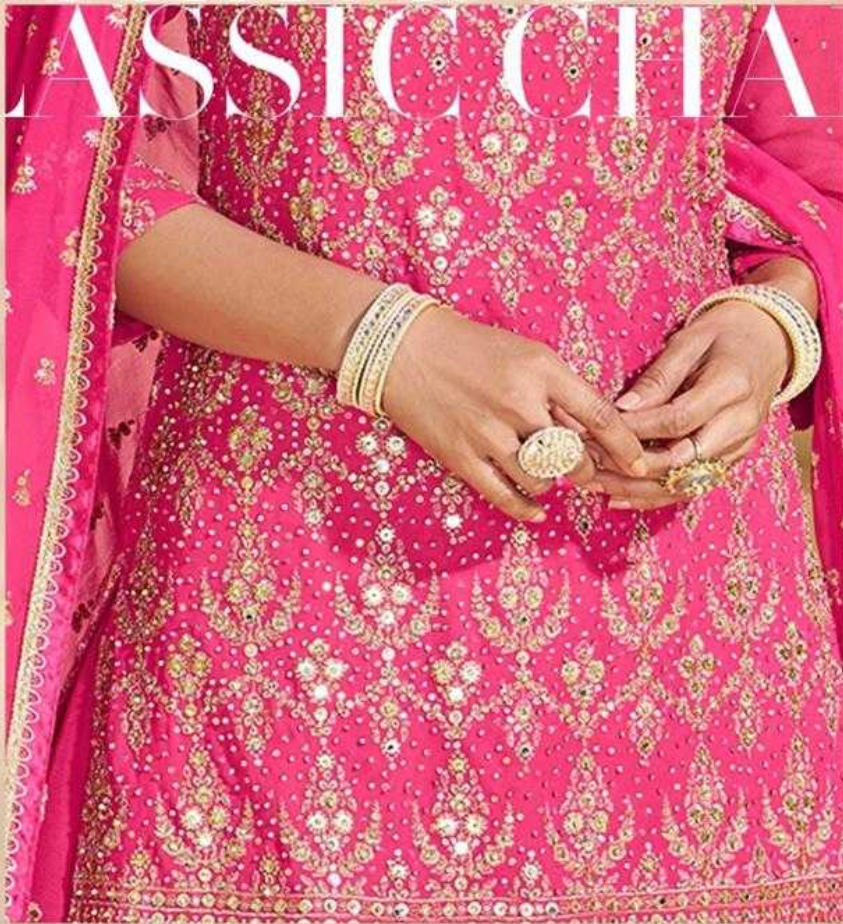


FESTIVE FALL





# STYLE AND CLASSIC CHARM



Feel like you've stepped straight out a regal empire; and your dream of looking like a princess is just accomplished!

5801





**5800**



**5801**



**5802**

  
**SAYURI**<sup>®</sup>  
— Designer —

**MADHUBALA**

FESTIVE FALL





FESTIVE FALL



5800

Feel like you've stepped straight out a regal empire;

and your dream of looking like a princess is just accomplished!



**SAYURI®**  
Designer



**5801**

Feel like you've stepped straight out a regal empire; and your dream of looking like a princess is just accomplished!



FESTIVE FALL

