



25320

Saree Style : Ready to wear
Fabric : Two Tone Satin Silk
Work : Dual Sequins
with Minor Work
Accessories : Blouse, Cape, Belt



25312

Saree Style : Ready to wear
Fabric : Two Tone Satin Silk
Work : Dual Sequins with Pearl Work
Accessories : Blouse, Belt



25319



MAHOTSAVGROUPOFFICIAL

Follow us for updates!

Saree Style : Ready to wear
Fabric : Two Tone Satin Silk
Work : Pearl with Handwork
Accessories : Blouse, Poncho, Belt



Scan the code for an
exclusive video



25316

Saree Style : Ready to wear
Fabric : Crepe Satin Silk
Work : Pearl with Handwork
Accessories : Two Blouses, Belt



25310



@MAHOTSAVGROUPOFFICIAL

Follow us for updates!

Saree Style : *Ready to wear*
Fabric : *Crepe Satin Silk*
Work : *Pearl with Handwork*
Accessories : *Blouse, Belt*



Scan the code for an
exclusive video



25308



MAHOTSAVGROUPOFFICIAL

Follow us for updates!

Saree Style : Ready to wear
Fabric : Two Tone Satin Silk
Work : Pearl with Handwork
Accessories : Cloak Blouse, Bel



Scan the code for an
exclusive video



25318



MAHOTSAVGROUPOFFICIAL

Follow us for updates!

Saree Style : *Ready to wear*
Fabric : *Two Tone Satin Silk*
Work : *Dual Sequins with Pearl Work*
Accessories : *Blouse, Poncho, Belt*



Scan the code for an
exclusive video



25314



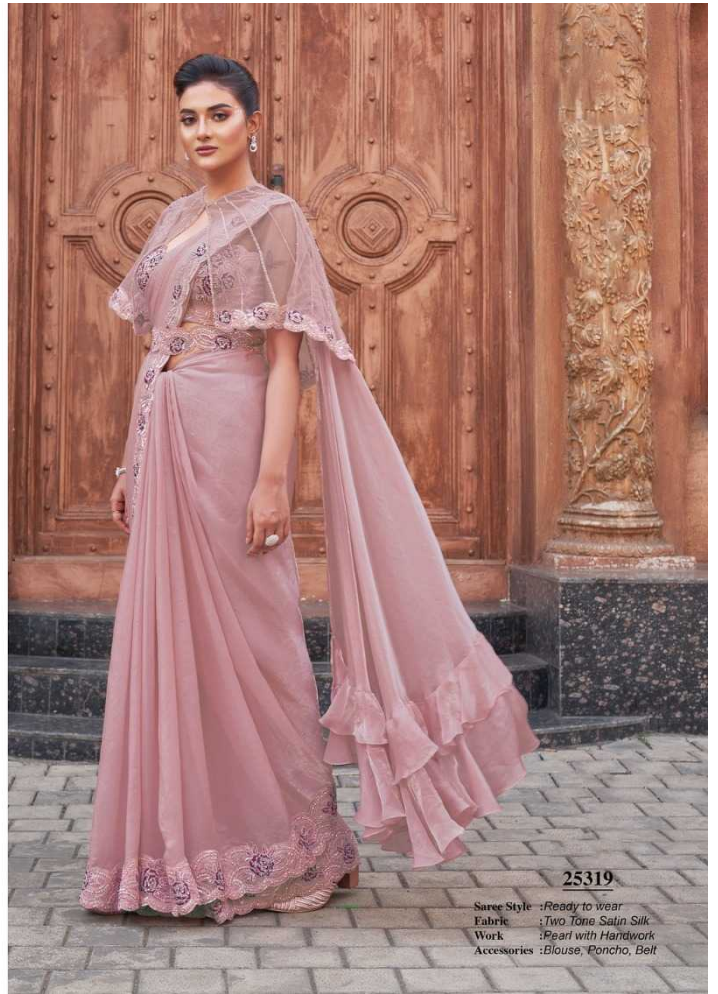
MAHOTSAVGROUPOFFICIAL

Follow us for updates!

Saree Style : Ready to wear
Fabric : Two Tone Satin Silk
Work : Dual Sequins
with Pearl and Hand Work
Accessories : Blouse, Belt



Scan the code for an
exclusive video





25310

Saree Style: Ready to wear
Fabric : Crepe Satin Silk
Work : Pearl with Handwork
Accessories: Blouse, Belt



25316



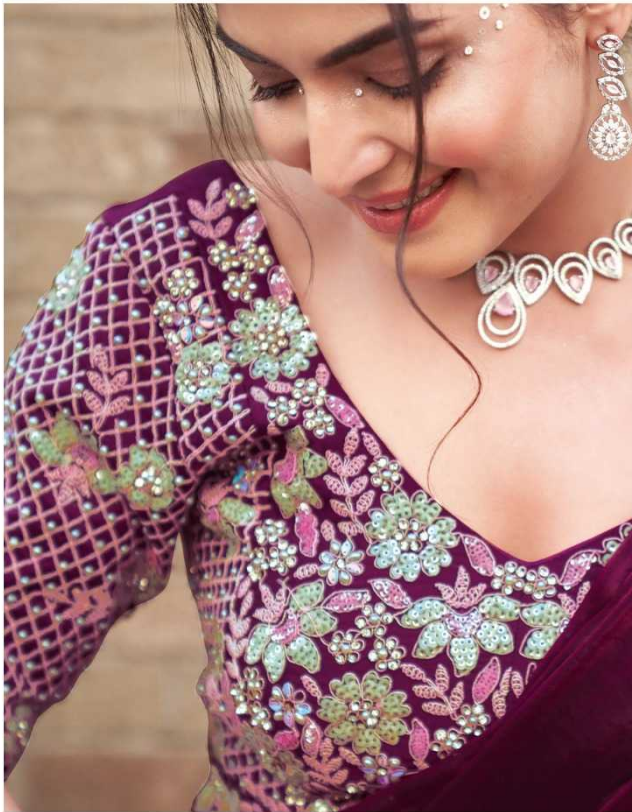
@MAHOTSAVGROUPOFFICIAL

Follow us for updates!

Saree Style : *Ready to wear*
Fabric : *Crepe Satin Silk*
Work : *Pearl with Handwork*
Accessories : *Two Blouses, Belt*



Scan the code for an
exclusive video



25314

Saree Style : Ready to wear
 Fabric : Two Tone Satin Silk
 Work : Dual Sequins
 with Pearl and Hand Work
 Accessories : Blouse, Belt



25318

Saree Style : Ready to wear
 Fabric : Two Tone Satin Silk
 Work : Dual Sequins
 with Pearl Work
 Accessories : Blouse, Poncho, Belt



25315



MAHOTSAVGROUPOFFICIAL

Follow us for updates!

Saree Style : *Ready to wear*
Fabric : *Two Tone Satin Silk*
Work : *Sequins with Pearl Work*
Accessories : *Blouse, Poncho, Belt*



Scan the code for an
exclusive video



25313

Saree Style : Ready to wear
Fabric : Two Tone Satin Silk
Work : Dual Sequins with Handwork
Accessories : Blouse, Belt



25311



MAHOTSAVGROUPOFFICIAL

Follow us for updates!

Saree Style : *Ready to wear*
Fabric : *Crepe Satin Silk*
Work : *Crepe Satin Silk*
Accessories : *Blouse, Poncho, Belt*



Scan the code for an
exclusive video



25309

Saree Style : Ready to wear
Fabric : Shimmer Chiffon
Work : Sequins with Handwork
Accessories : Blouse, Cape, Belt



25315

Saree Style : Ready to wear
Fabric : Two Tone Satin Silk
Work : Sequins with Pearl Work
Accessories : Blouse, Poncho, Belt



25312



MAHOTSAVGROUPOFFICIAL

Follow us for updates!

Saree Style : *Ready to wear*
Fabric : *Two Tone Satin Silk*
Work : *Dual Sequins with Pearl Work*
Accessories : *Blouse, Belt*



Scan the code for an
exclusive video



25311

Saree Style : Ready to wear
Fabric : Crepe Satin Silk
Work : Crepe Satin Silk
Accessories : Blouse, Poncho, Belt



25313



MAHOTSAVGROUPOFFICIAL

Follow us for updates!

Saree Style : *Ready to wear*
Fabric : *Two Tone Satin Silk*
Work : *Dual Sequins with Pearl Work*
Accessories : *Blouse, Belt*



Scan the code for an
exclusive video



25317



MAHOTSAVGROUPOFFICIAL

Follow us for updates!

Saree Style : *Ready to wear*
Fabric : *Two Tone Satin Silk*
Work : *Four Sequins with Handwork*
Accessories : *Blouses, Belt*



Scan the code for an
exclusive video



25309



MAHOTSAVGROUP.OFFICIAL

Follow us for updates!

Saree Style : *Ready to wear*
Fabric : *Shimmer Chiffon*
Work : *Sequins with Handwork*
Accessories : *Blouse, Cape, Belt*



Scan the code for an
exclusive video



25308

Saree Style : Ready to wear
Fabric : Two Tone Satin Silk
Work : Pearl with Handwork
Accessories : Cloak Blouse, Bel



25320



MAHOTSAVGROUPOFFICIAL

Follow us for updates!

Saree Style : *Ready to wear*
Fabric : *Two Tone Satin Silk*
Work : *Dual Sequins with Mirror Work*
Accessories : *Blouse, Cape, Belt*



Scan the code for an
exclusive video



25320

Saree Style : Ready to wear
Fabric : Two Tone Satin Silk
Work : Dual Sequins
with Minor Work
Accessories : Blouse, Cape, Belt



25320

Saree Style : Ready to wear
Fabric : Two Tone Satin Silk
Work : Dual Sequins
with Minor Work
Accessories : Blouse, Cape, Belt



25309



MAHOTSAVGROUP.OFFICIAL

Follow us for updates!

Saree Style : *Ready to wear*
Fabric : *Shimmer Chiffon*
Work : *Sequins with Handwork*
Accessories : *Blouse, Cape, Belt*



Scan the code for an
exclusive video



25313



MAHOTSAVGROUPOFFICIAL

Follow us for updates!

Saree Style : Ready to wear
Fabric : Two Tone Satin Silk
Work : Dual Sequins with Pearl Work
Accessories : Blouse, Belt



Scan the code for an
exclusive video



25316



@MAHOTSAVGROUPOFFICIAL

Follow us for updates!

Saree Style : *Ready to wear*
Fabric : *Crepe Satin Silk*
Work : *Pearl with Handwork*
Accessories : *Two Blouses, Belt*



Scan the code for an
exclusive video



25310



@MAHOTSAVGROUPOFFICIAL

Follow us for updates!

Saree Style : *Ready to wear*
Fabric : *Crepe Satin Silk*
Work : *Pearl with Handwork*
Accessories : *Blouse, Belt*



Scan the code for an
exclusive video



25318

Saree Style : Ready to wear
 Fabric : Two Tone Satin Silk
 Work : Dual Sequins
 with Pearl Work
 Accessories : Blouse, Poncho, Belt



25320



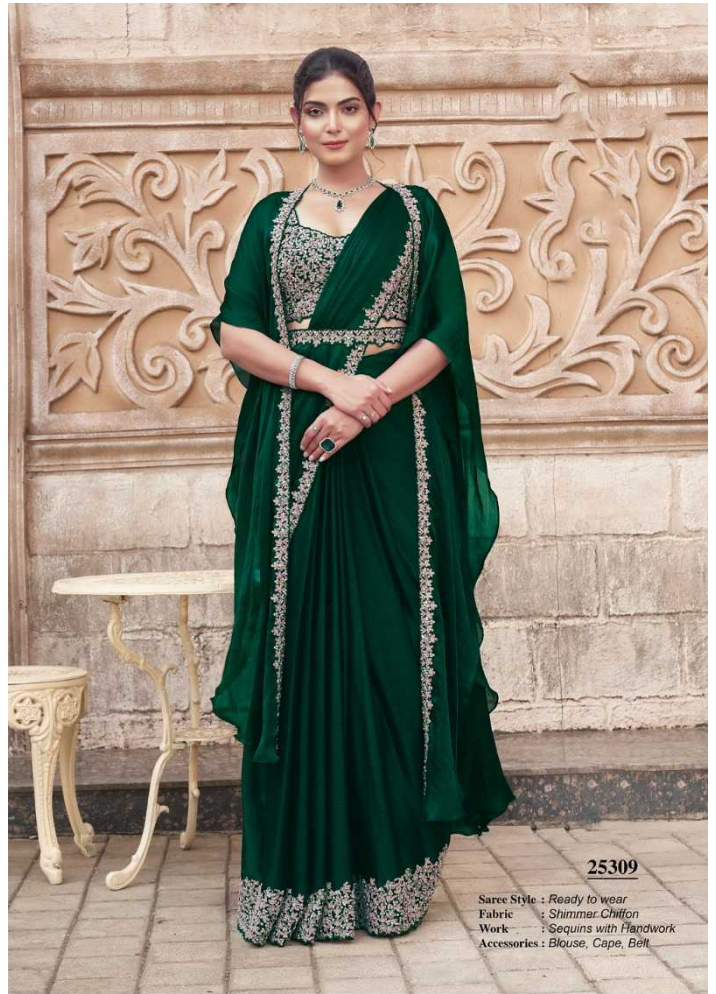
MAHOTSAVGROUPOFFICIAL

Follow us for updates!

Saree Style : *Ready to wear*
Fabric : *Two Tone Satin Silk*
Work : *Dual Sequins with Mirror Work*
Accessories : *Blouse, Cape, Belt*



Scan the code for an
exclusive video



25309

Saree Style : Ready to wear
Fabric : Shimmer Chiffon
Work : Sequins with Handwork
Accessories : Blouse, Cape, Belt





25316

Saree Style : Ready to wear
Fabric : Crepe Satin Silk
Work : Pearl with Handwork
Accessories : Two Blouses, Belt



25310

Saree Style: Ready to wear
Fabric : Crepe Satin Silk
Work : Pearl with Handwork
Accessories: Blouse, Belt



25318



MAHOTSAVGROUPOFFICIAL

Follow us for updates!

Saree Style : Ready to wear
Fabric : Two Tone Satin Silk
Work : Dual Sequins with Pearl Work
Accessories : Blouse, Poncho, Belt



Scan the code for an
exclusive video