

SHE IS A DREAM

Attire

FOR THE ONE
WHO CAN SET
FASHION GOALS
ADORNING PASTE
DRAPES EMBELLISHED
WITH MATCHLESS ART

kira



SHE IS A DREAM

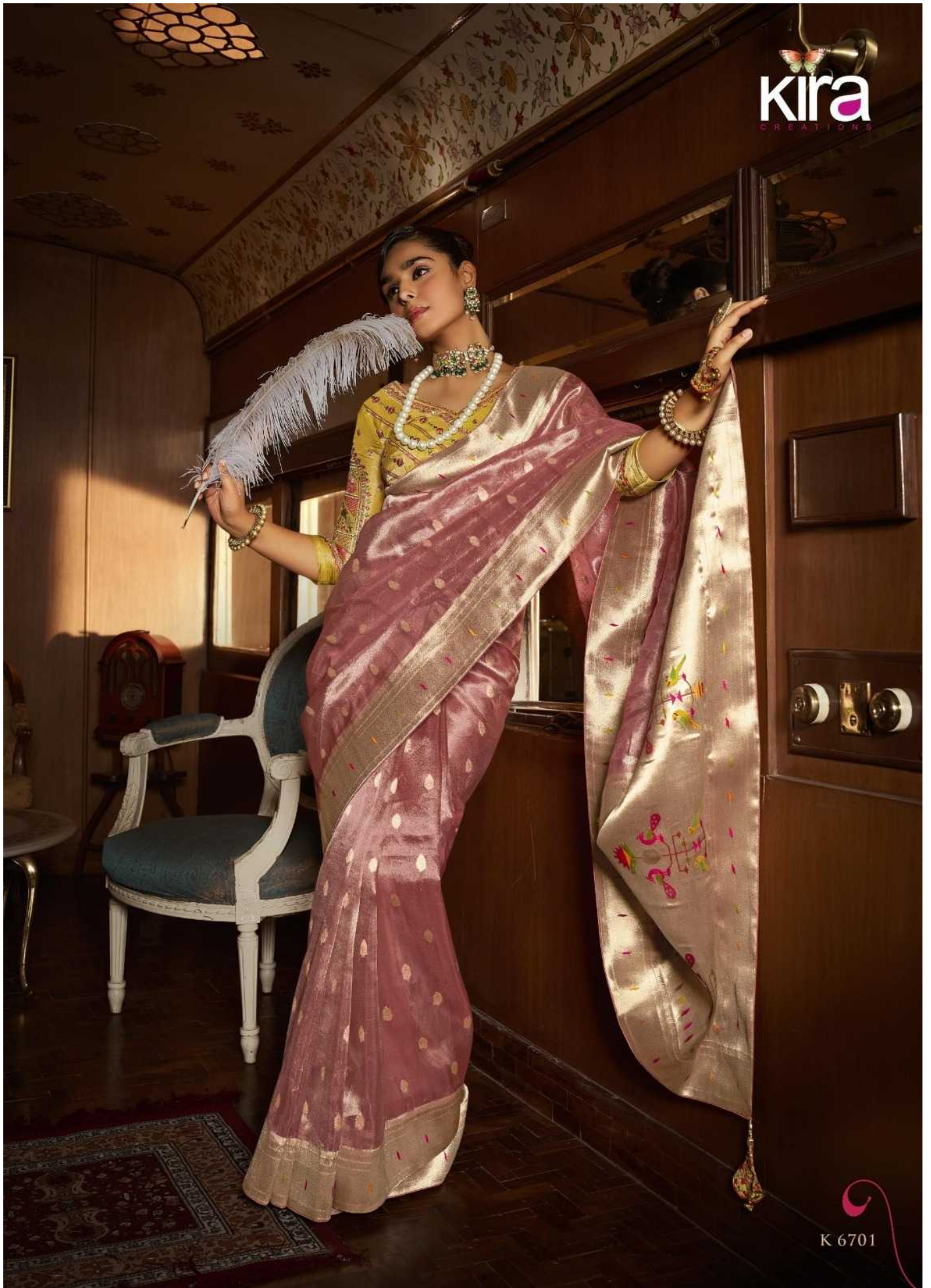
Attire

FOR THE ONE
WHO CAN SET
FASHION GOALS
ADORNING PASTE
DRAPES EMBELLISHED
WITH MATCHLESS ART

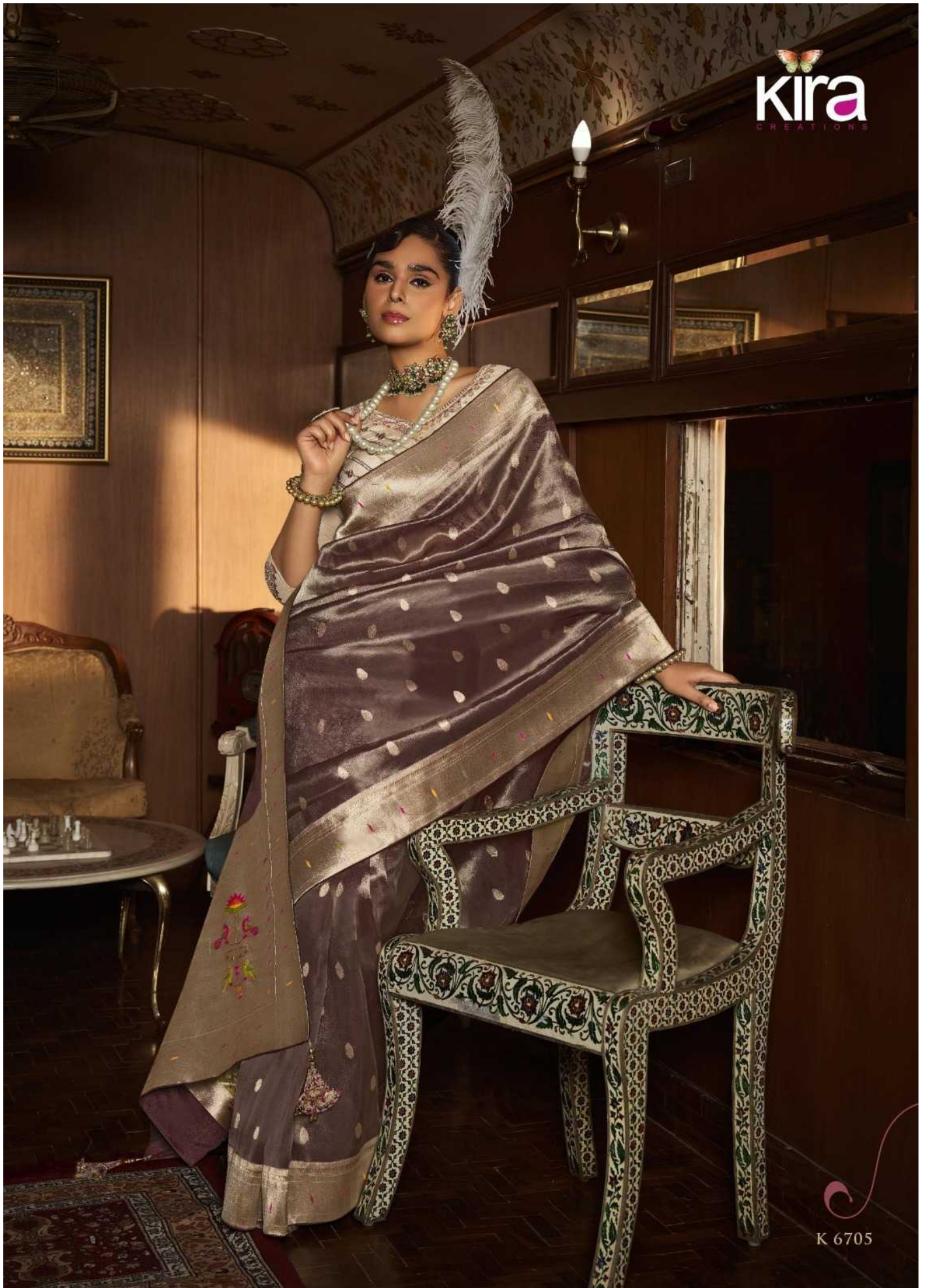


FOR THE ONE WHO
ASPIRES TO EMBRACE
TRADITION WITH
MODERNITY, REDESIGN
AND TREAT YOUR
WARDROBE WITH
SPANKING NEW
DESIGNER SAREES.


Kira
CREATIONS




K 6701





SHE IS A
GLAMOUR
Heritage



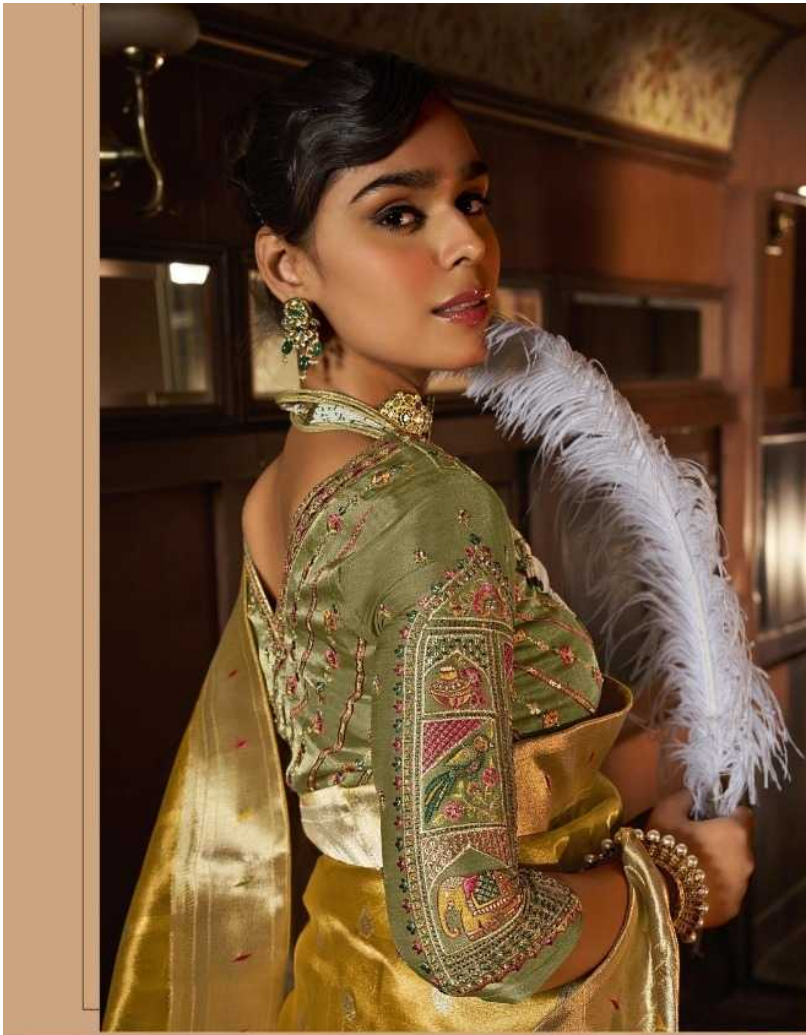
THIS SEASON EMBRACE YOUR
GLAMOROUS SIDE ADORNING
INDIAN HERITAGE!

SHE IS A TIMELESS
Wardrobe



PRESENTING THE CREATION THAT
REFLECTS INDIAN ESSENCE THAT PORTRAYS
HER ELEGANCE AND CLASSIC PANACHE:
"SHE IS THE MOST GRACEFUL."





SHE IS A
TRUE
Admirer

FOR THE ONE
WHO LOVES NATURE,
THE ONE WHO IS
ALWAYS ATTACHED
WITH HER ROOTS





SHE IS A FASHION
*God*dess



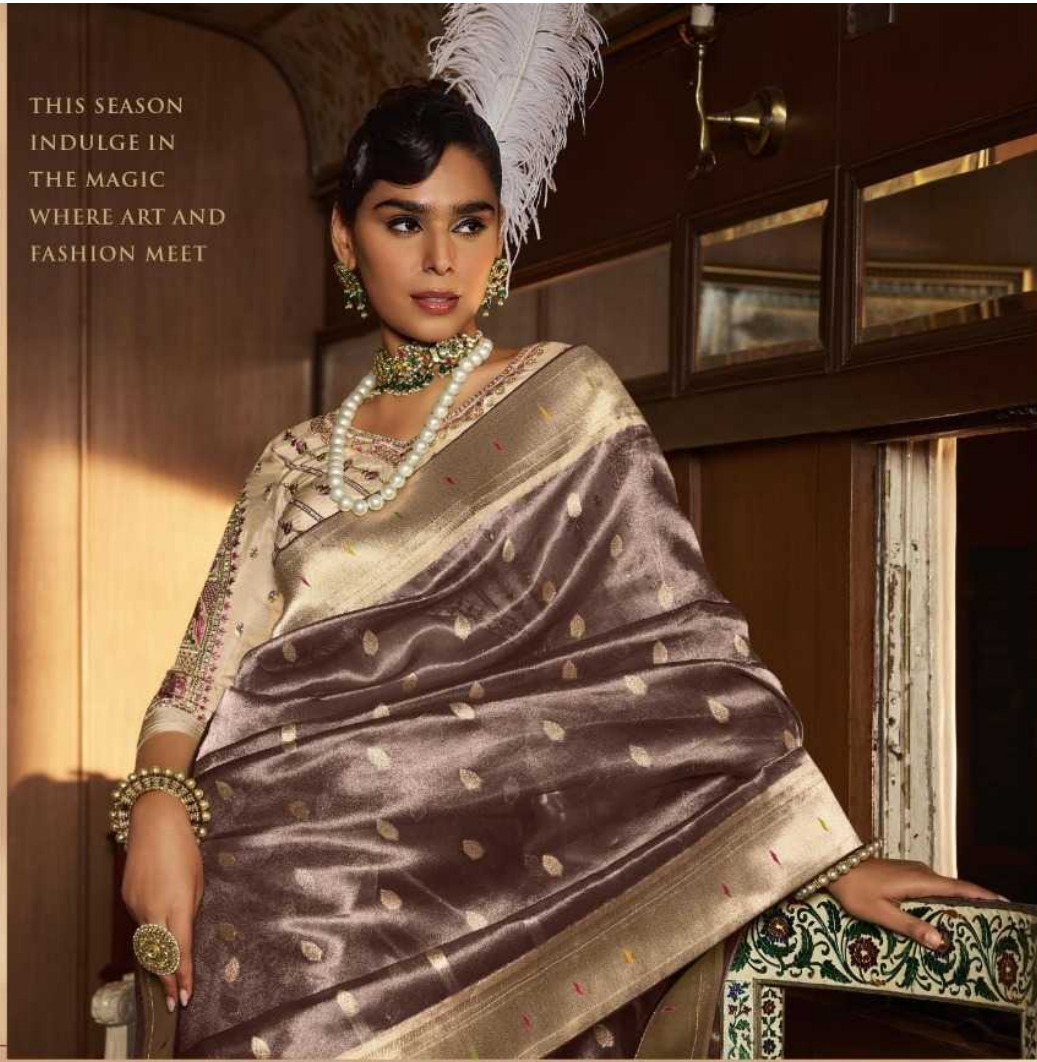


SHE IS A
SAREE
Lover



THIS SEASON
LUXURIATE THE LAVISH
CELEBRATION WEAR
THIS FESTIVE SEASON
WITH THIS LATEST
EDITION.

THIS SEASON
INDULGE IN
THE MAGIC
WHERE ART AND
FASHION MEET



SHE IS A CULTURAL
Canvas



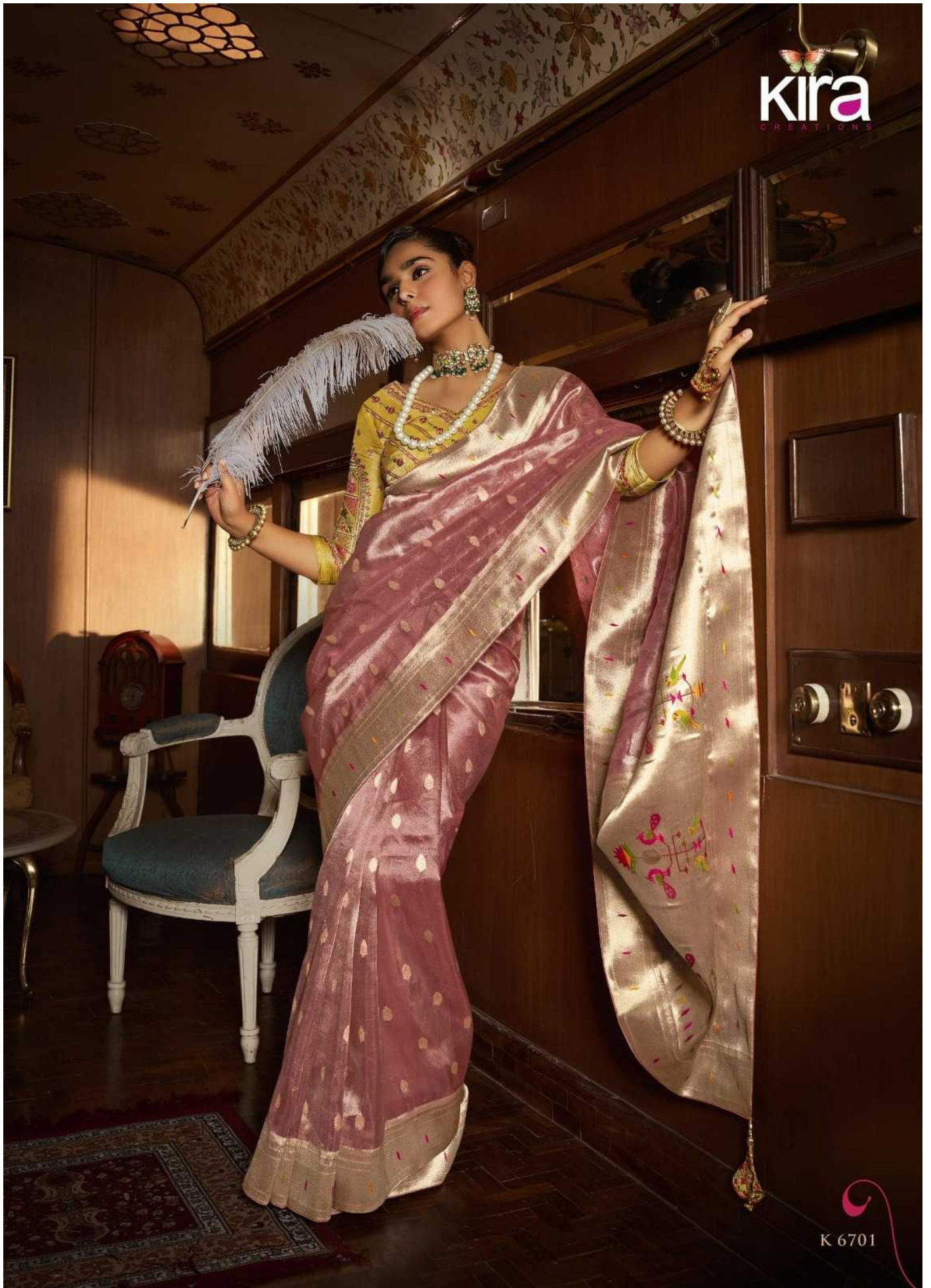
SHE IS A DREAM
Attire

FOR THE ONE
WHO CAN SET
FASHION GOALS
ADORNING PASTE
DRAPES EMBELLISHED
WITH MATCHLESS ART



FOR THE ONE WHO
ASPIRES TO EMBRACE
TRADITION WITH
MODERNITY, REDESIGN
AND TREAT YOUR
WARDROBE WITH
SPANKING NEW
DESIGNER SAREES.


Kira
CREATIONS




K 6701





