



RASAM-104



RASAM-107



RASAM-108



RASAM-101



RASAM-102



RASAM-103



RASAM-104



RASAM-105



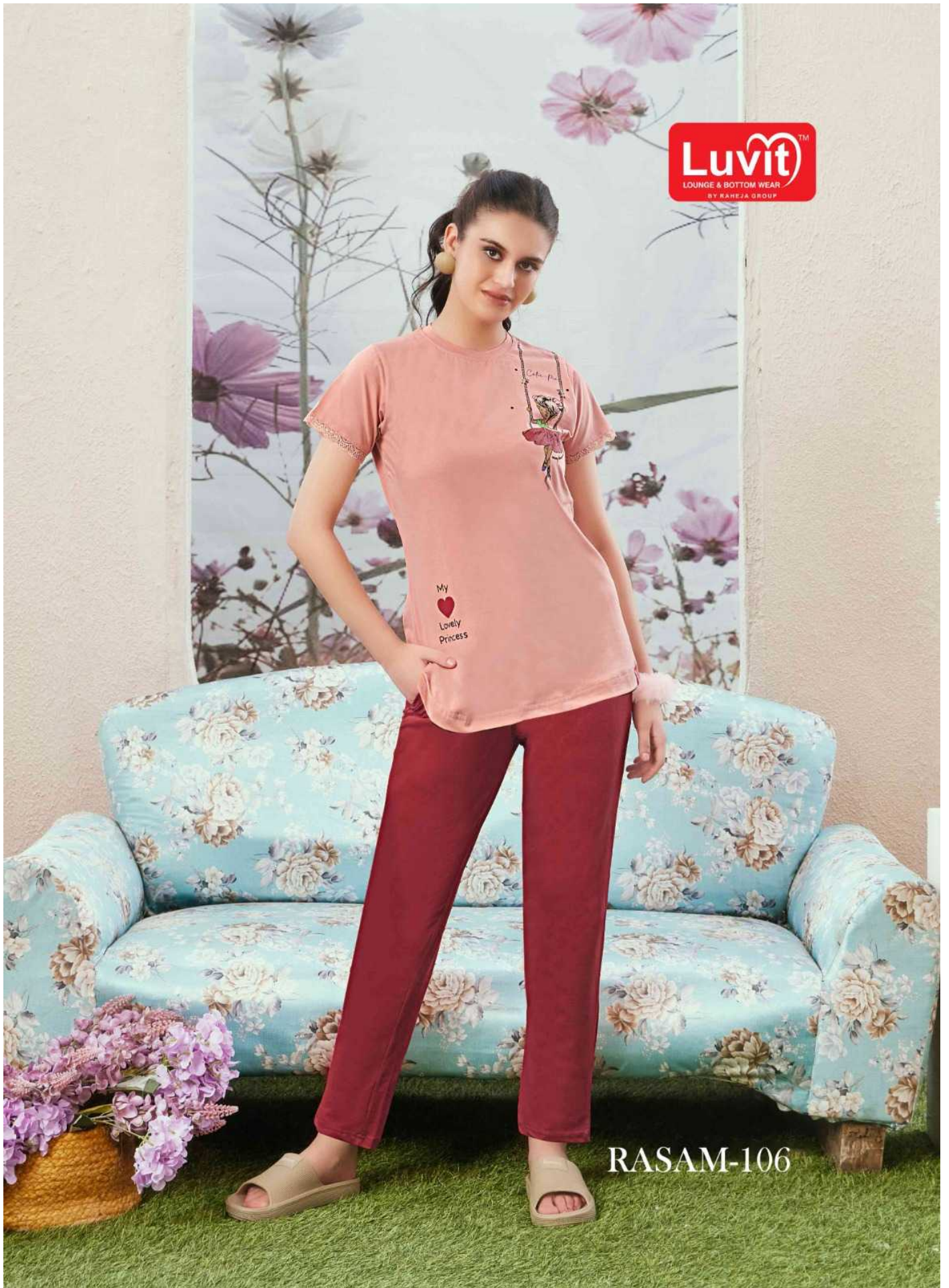
RASAM-106



RASAM-107



RASAM-108



RASAM-106

STUNNING^{BEAUTY}

Now's the time to be a little more adventures in design and colours of your patiyala experience the exotic floral bliss in soft chocolate and design work which gives a sweetly feminine touch to your personality



ESSENZA FASHION

Bright colour is one of the strongest fashion statement of the season and bold prints give fashion a more ethereal and exotic effect.





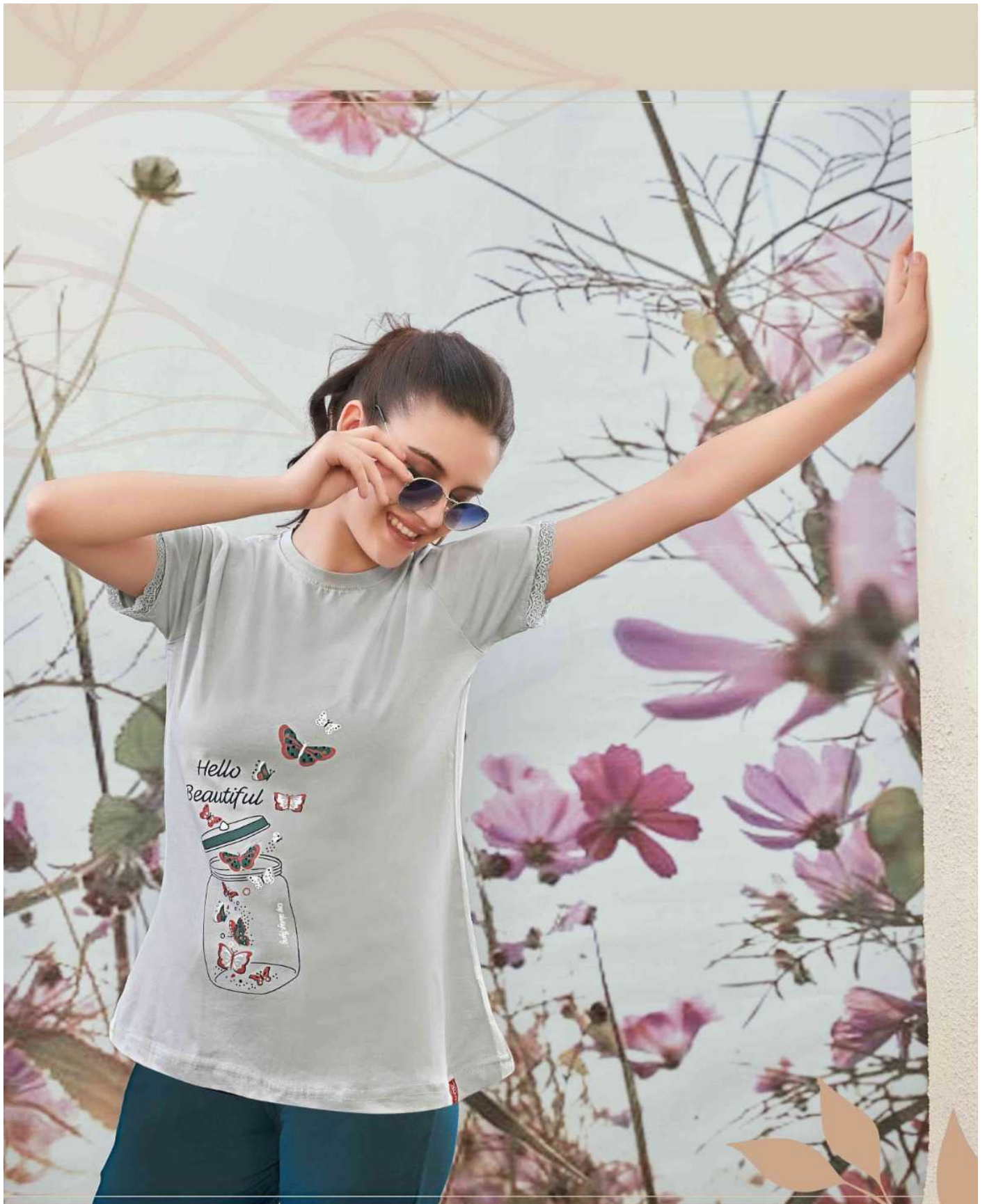
ESSENZA  **FASHION**

Bright colour is one of the strongest fashion statement of the season and bold prints give fashion a more ethereal and exotic effect.

GRACEFUL FASHION

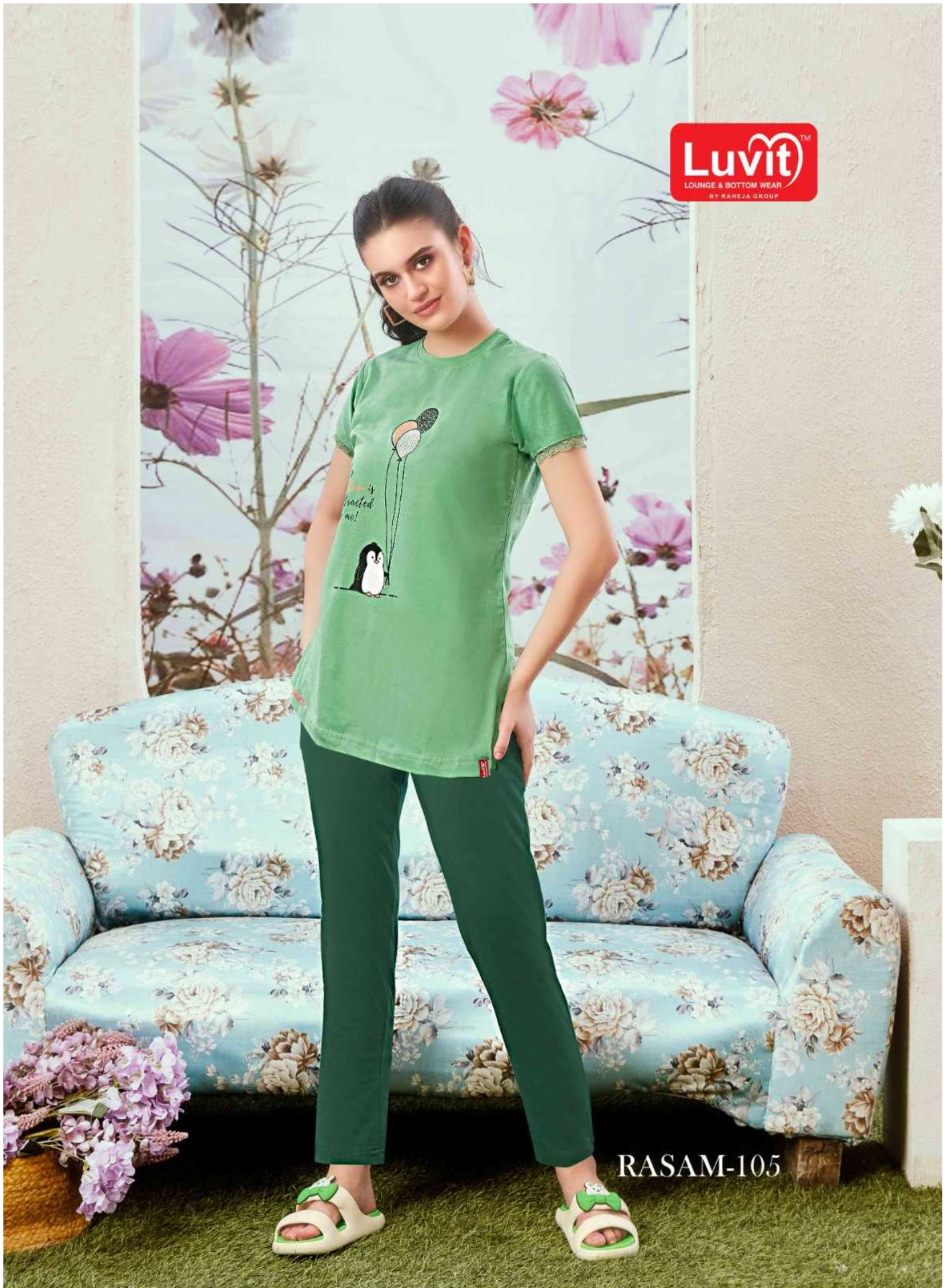
Bright colour is one of the strongest fashion statement of the season and bold prints give fashion a more ethereal and exotic effect.





EXOTIC FLORAL

Harm patiyala are a mix of classics and contemporary waves. the colours are fresh for the season.



RASAM-105



RASAM-102

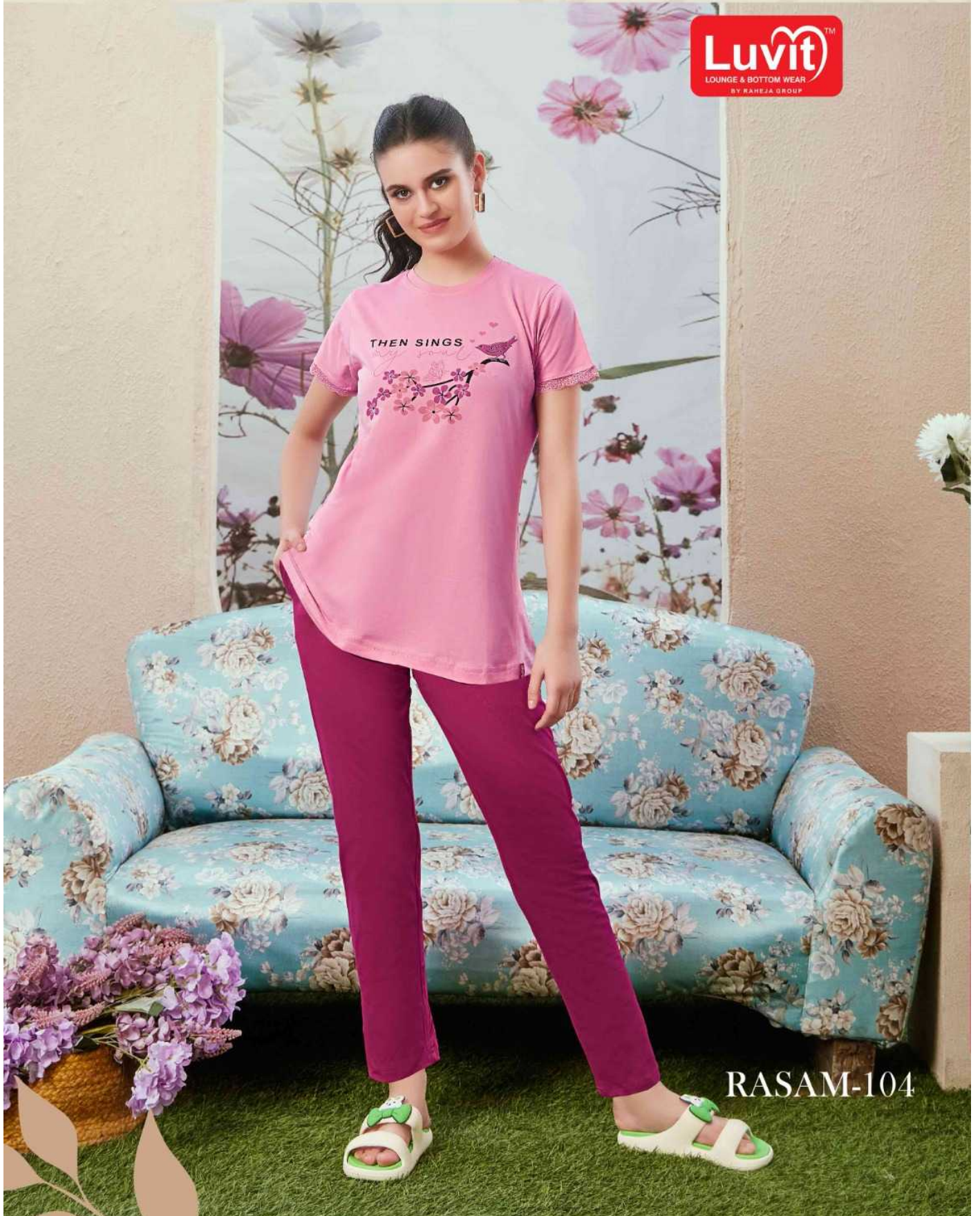


EXOTIC FLORAL

Harm patiyala are a mix of classics and contemporary waves. the colours are fresh for the season.



RASAM-103



RASAM-104

STUNNING^{BEAUTY}

Now's the time to be a little more adventures in design and colours of your patiyala experience. It's a floral bliss in soft chocolate and design work which gives a sweetly feminine touch to your personality.



CLASSY AND COMFORT COMBINATION

RASAM





SAVED TO
DRAMATIC



RASAM-101