



24915

FABRIC : TWO TONE SATIN SILK
BLOUSE : HAND WORK READY TO WEAR

When to
Wear
ELYSSIA?



Ideal for upscale events like galas,
Dinner parties, weddings,
and receptions where elegance
and sophistication are key.



24915



24915

FABRIC : TWO TONE SATIN SILK
BLOUSE : HAND WORK READY TO WEAR



MOHMANTHAN™

Royal



MAHOTSAV
GROUP



ELYSIA

III



24913



24914

FABRIC : CREPE SATIN SILK
BLOUSE : HAND WORK READY TO WEAR



24914



24911

FABRIC : SHIMMER CHIFFON
BLOUSE : HAND WORK READY TO WEAR



24911



24910



24908C

FABRIC : TWO TONE SATIN SILK
BLOUSE : HAND WORK READY TO WEAR

≡



24910

FABRIC : TWO TONE SATIN SILK
BLOUSE : HAND WORK READY TO WEAR



WHO'S WEARING ELYSSIA?

Elyssia is for the bold, effortlessly stylish modern woman who loves blending tradition with contemporary flair. Perfect for the younger generation looking to stand out with elegance and shimmer.

24904



24906

FABRIC : TWO TONE SATIN SILK
BLOUSE : HAND WORK READY TO WEAR

HOW TO WEAR ELYSSIA?

Let the drapes shine—pair them with minimal accessories like a sleek clutch or a delicate ring for a balanced yet chic look.



|||



24906



24907

FABRIC : TWO TONE SATIN SILK
BLOUSE : HAND WORK READY TO WEAR



≡

24907



24907C



24908B

FABRIC : TWO TONE SATIN SILK
BLOUSE : HAND WORK READY TO WEAR



24908D

FABRIC : TWO TONE SATIN SILK
BLOUSE : HAND WORK READY TO WEAR






MOHMANTHAN™

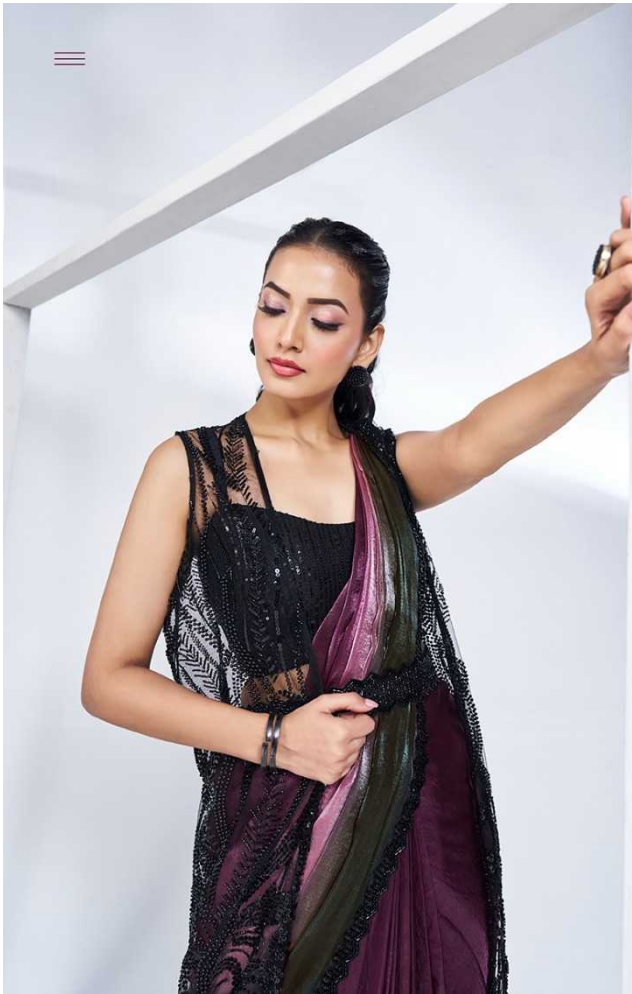

MAHOTSAV
GROUP

ELYSSIA

WHAT IS ELYSSIA?

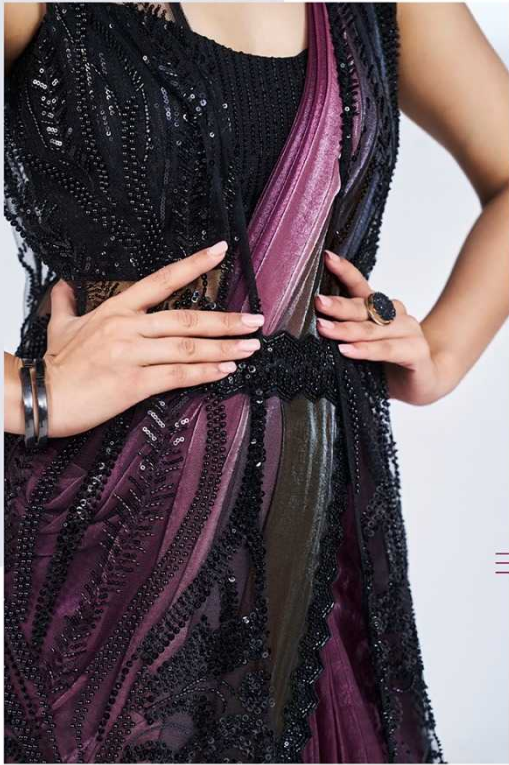
The name Elyssia evokes thoughts of elegance and paradise, symbolizing a world of beauty and grace. Just like its name, the collection embodies sophistication, luxury, and timeless charm.





24903

FABRIC : TWO TONE SATIN SILK
BLOUSE : HAND WORK READY TO WEAR





24904

FABRIC : TWO TONE SATIN SILK
BLOUSE : HAND WORK READY TO WEAR



WHY SHOULD YOU CHOOSE ELYSSIA?

Each saree in the Elyssia collection is a testament to exceptional craftsmanship.
The intricate sequins and cut dana work showcase
the quality and artistry behind every piece, making it a true work of wearable art.

24904



24915

FABRIC : TWO TONE SATIN SILK
BLOUSE : HAND WORK READY TO WEAR

III



24913



24914

FABRIC : CREPE SATIN SILK
BLOUSE : HAND WORK READY TO WEAR



24911

FABRIC : SHIMMER CHIFFON
BLOUSE : HAND WORK READY TO WEAR

≡



24910

FABRIC : TWO TONE SATIN SILK
BLOUSE : HAND WORK READY TO WEAR



24908C

FABRIC : TWO TONE SATIN SILK
BLOUSE : HAND WORK READY TO WEAR





24907C



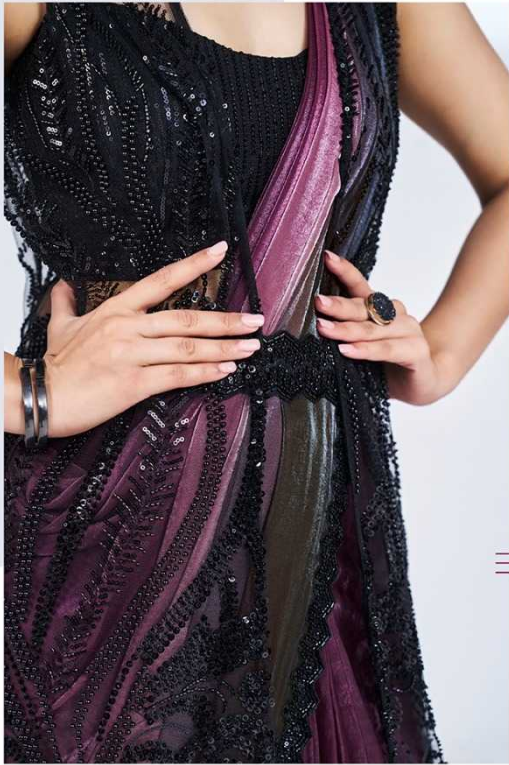
24908B

FABRIC : TWO TONE SATIN SILK
BLOUSE : HAND WORK READY TO WEAR



24908D

FABRIC : TWO TONE SATIN SILK
BLOUSE : HAND WORK READY TO WEAR





24904

FABRIC : TWO TONE SATIN SILK
BLOUSE : HAND WORK READY TO WEAR