



**25510**  
**Saree Style:** Ready to Wear  
**Fabric:** Two Tone Satin Silk  
**Work:** Sequins and Beads Aari Work  
**Accessories:** Ruffle Sleeves Blouse, Belt







**25506**  
**Saree Style:** Ready to Wear  
**Fabric:** Two Tone Satin Silk  
**Work:** Sequins and Beads Aari Work  
**Accessories:** Lantern Sleeves Blouse, Belt

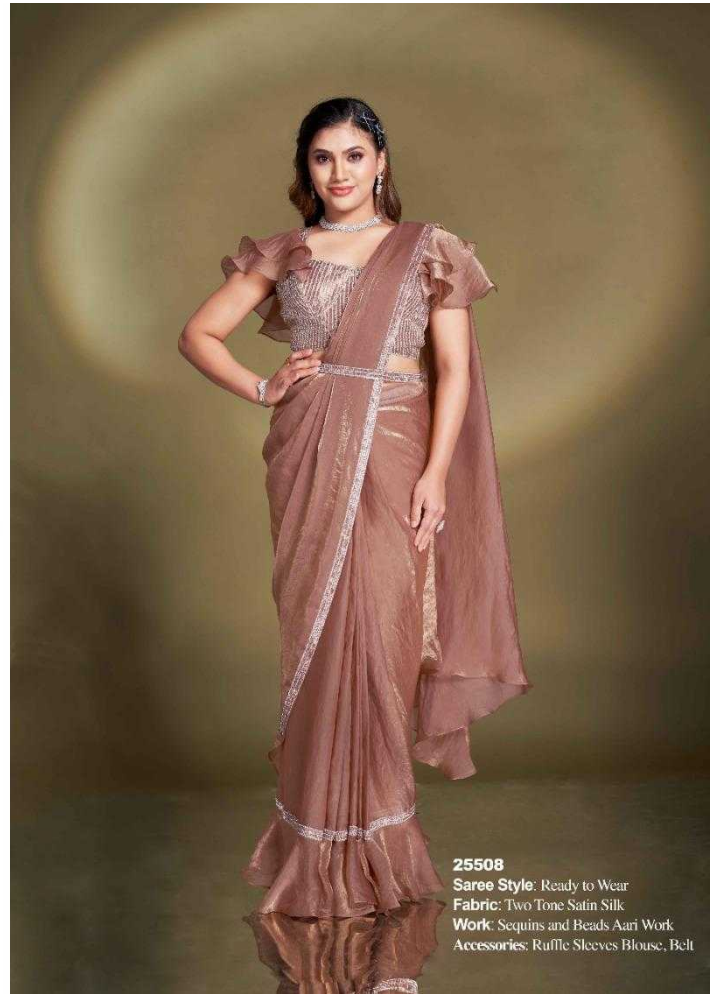












**25508**  
**Saree Style:** Ready to Wear  
**Fabric:** Two Tone Satin Silk  
**Work:** Sequins and Beads Aari Work  
**Accessories:** Ruffle Sleeves Blouse, Belt





**25509**  
**Saree Style:** Ready to Wear  
**Fabric:** Crepe Satin Silk  
**Work:** Sequins and Beads Aari Work  
**Accessories:** Ruffle Sleeves Blouse, Belt





**25510**  
**Saree Style:** Ready to Wear  
**Fabric:** Two Tone Satin Silk  
**Work:** Sequins and Beads Aari Work  
**Accessories:** Ruffle Sleeves Blouse, Belt



# DREAMLIKE











**25512**  
**Saree Style:** Ready to Wear  
**Fabric:** Crepe Satin Silk  
**Work:** Sequins and Beads Aari Work  
**Accessories:** Flared Bell Sleeves Blouse, Belt



**25513**  
**Saree Style:** Ready to Wear  
**Fabric:** Crepe Satin Silk  
**Work:** Sequins and Beads Aari Work  
**Accessories:** tulle Sleeves Blouse, Belt





# BONITA







**25514**  
**Saree Style:** Ready to Wear  
**Fabric:** Two Tone Satin Silk  
**Work:** Sequins and Beads Aari Work  
**Accessories:** Ruffle Sleeves Blouse, Belt





25506



25507



25508



25509



25510



25511



25512



25513



25514



DESIGN NO	SAREE FABRIC	BLOUSE FABRIC	WORK	Accessories	Belt	SAREE TYPE	CUSTZ.(SEMISTITCH/UN-STITCH)	BLOUSE SIZE
25506	Two Tone Satin Silk	Poly Crepe	Sequins, Beads Aaari work	Lantern Sleeves Blouse, Belt	Available	Ready to wear	Stitched Blouse	up to 38 Inch with margin of 42 inch
25507	Crepe Satin Silk	Poly Crepe	Sequins, Beads Aaari work	Baloon Sleeves Blouse, Belt	Available	Ready to wear	Stitched Blouse	up to 38 Inch with margin of 42 inch
25508	Two Tone Satin Silk	Poly Crepe	Sequins, Beads Aaari work	Ruffle Sleeves Blouse, Belt	Available	Ready to wear	Stitched Blouse	up to 38 Inch with margin of 42 inch
25509	Crepe Satin Silk	Poly Crepe	Sequins, Beads Aaari work	Ruffle Sleeves Blouse, Belt	Available	Ready to wear	Stitched Blouse	up to 38 Inch with margin of 42 inch
25510	Two Tone Satin Silk	Poly Crepe	Sequins, Beads Aaari work	Ruffle Sleeves Blouse, Belt	Available	Ready to wear	Stitched Blouse	up to 38 Inch with margin of 42 inch
25511	Crepe Satin Silk	Poly Crepe	Sequins, Beads Aaari work	Puffed Sleeves Blouse, Belt	Available	Ready to wear	Stitched Blouse	up to 38 Inch with margin of 42 inch
25512	Crepe Satin Silk	Poly Crepe	Sequins, Beads Aaari work	Flared Belt Sleeves Blouse, Belt	Available	Ready to wear	Stitched Blouse	up to 38 Inch with margin of 42 inch
25513	Crepe Satin Silk	Poly Crepe	Sequins, Beads Aaari work	Ruffle Sleeves Blouse, Belt	Available	Ready to wear	Stitched Blouse	up to 38 Inch with margin of 42 inch
25514	Two Tone Satin Silk	Poly Crepe	Sequins, Beads Aaari work	Ruffle Sleeves Blouse, Belt	Available	Ready to wear	Stitched Blouse	up to 38 Inch with margin of 42 inch









**25506**  
**Saree Style:** Ready to Wear  
**Fabric:** Two Tone Satin Silk  
**Work:** Sequins and Beads Aari Work  
**Accessories:** Lantern Sleeves Blouse, Belt





**25507**  
**Saree Style:** Ready to Wear  
**Fabric:** Crepe Satin Silk  
**Work:** Sequins and Beads Aari Work  
**Accessories:** Balloon Sleeves Blouse, Belt





**25509**  
**Saree Style:** Ready to Wear  
**Fabric:** Crepe Satin Silk  
**Work:** Sequins and Beads Aari Work  
**Accessories:** Ruffle Sleeves Blouse, Belt







# BONITA









**25512**  
**Saree Style:** Ready to Wear  
**Fabric:** Crepe Satin Silk  
**Work:** Sequins and Beads Aari Work  
**Accessories:** Flared Bell Sleeves Blouse, Belt

